

Safety First

EMERGENCY EVACUATION SYSTEM

Emergency evacuation system is developed to ensure the safest and most efficient evacuation time of all expected residents of a structure, city, or region. A benchmark "evacuation time" for different hazards and conditions is established. These benchmarks can be established through using best



practices, regulations, or using simulations, such as modeling the flow of people in a building, to determine the benchmark. Proper planning will use multiple exits, contra-flow lanes, and special technologies to ensure full, fast and complete evacuation. Consideration for personal situations which may affect an individual's ability to evacuate is taken into account, including alarm signals that use both aural and visual alerts.



OverSeas
Technology

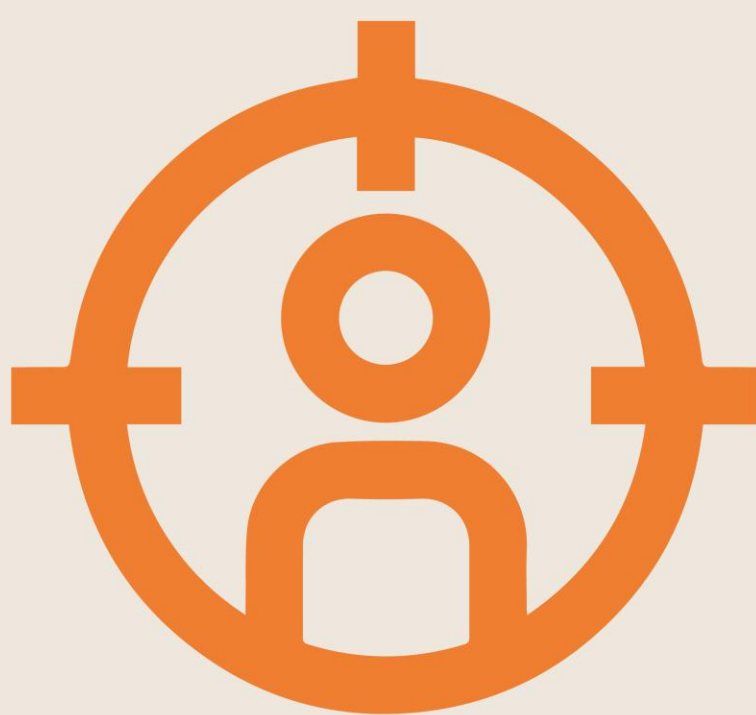


1. Purpose

This document explain the features available in our Emergency Evacuation System.

Emergency evacuation is the urgent immediate egress or escape of people away from an area that contains an imminent threat, an on-going threat or a hazard to lives or property.

Examples range from the small scale evacuation of a building due to a storm or fire to the large scale evacuation of a city because of a flood, bombardment or approaching weather system. In situations involving hazardous materials or possible contamination, evacuees may be decontaminated prior to being transported out of the contaminated area.



2. Audience

Primary audiences for this document are the management contacts at factories in charge of the systems covered by Overseas Technology Team Services, and the engineers in the extended Overseas Team

Why Overseas Emergency Evacuation System?



3. Introduction

Nobody expects an emergency or disaster - especially one that affects them their employees, and their business personally. Yet the simple truth is that emergencies and disasters can strike anyone anytime, and anywhere. you and your employees could be forced to evacuate your company when you least expect it.

This booklet is designed to help you, the employer, plan for that possibility. The best way to protect yourself, your workers, and your business is to expect the unexpected and develop a well-thought-out emergency action plan to guide you when immediate action is necessary.



4. what is a workplace emergency?

A workplace emergency is an unforeseen situation that threatens your employers, customers, or the public; or causes physical or environmental damage.

Emergencies may be natural or manmade and include the following:

Floods, Hurricanes, Toradoes, Fires, Toxic gas releases, Chemical spills, Radiological accidents, Explosions, Civil disturbances, and Workplace violence resulting in bodily harm and trauma.

Why Overseas Emergency Evacuation System?

5. How do you protect yourself, your employees, and your business?

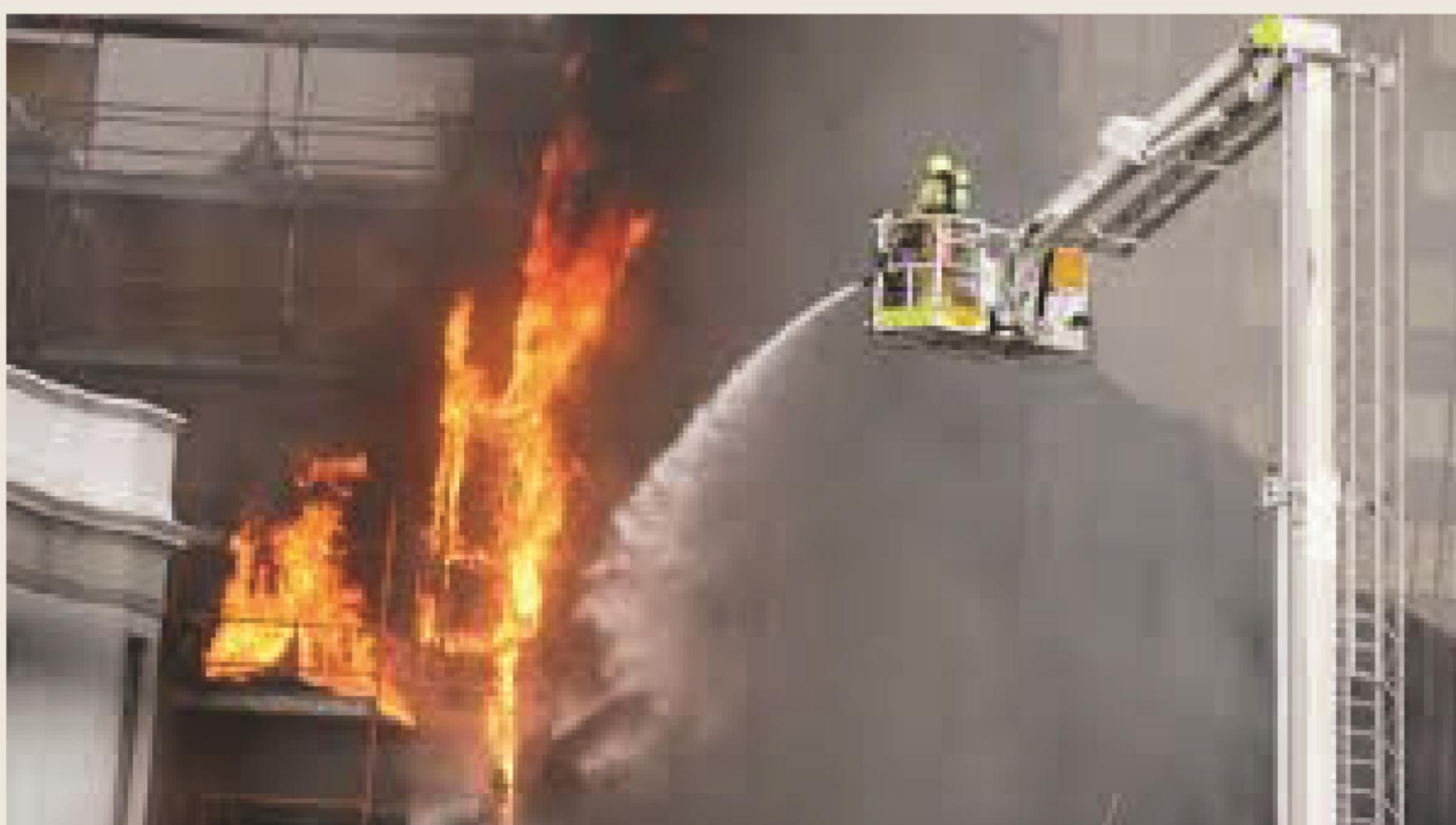
The best way is to respond to an emergency before it happens. how people can think clearly and logically in a crisis, so it is important to do so in advance, when you have time to be thorough.

Brainstorm the worst-case scenarios. Ask yourself what you would do if the worst happened. What if a fire broke out in your boiler room? Or a hurricane hit your building head-on? Once you have identified potential emergencies, consider how they would affect you and your workers and how you would respond.

6. What is an emergency action plan?

An emergency action plan covers designated actions employers and employees must take to ensure employee safety from fire and other emergencies. Not all employers are required to establish an emergency action plan. Even if you are not specifically required to do so, compiling an emergency action plan is a good way to protect yourself, your employees, and your business during an emergency.

Putting together a comprehensive emergency action plan that deals with all types of issues specific to your worksite is not difficult.



Why Overseas Emergency Evacuation System?

7. How do you alert employees to an emergency?

Your plan must include a way to alert employees, including disabled workers, to evacuate or take other action, and how to report emergencies as required. Among the steps you must take are the following:

- Make sure alarms are distinctive and recognized by all employees as a signal to evacuate the work area or perform actions identified in your plan;
- Make available an emergency communications system such as a public address system, portable radio unit, or other means to notify employees of the emergency and to contact local law enforcement, the fire department, and others; and
- Stipulate that alarms must be able to be heard, seen, or otherwise perceived by everyone in the workplace. You might want to consider providing an auxiliary power supply in the event that electricity is shut off.

Although it is not specifically required by OSHA, you also may want to consider the following:

- Using tactile devices to alert employees who would not otherwise be able to recognize an audible or visual alarm; and
- Providing an updated list of key personnel such as the plant manager or physician, in order of priority, to notify in the event of an emergency during off-duty hours.



Why OverSeas Emergency Evacuation System?

8. How do you develop an evacuation policy and procedures?

A disorganized evacuation can result in confusion, injury, and property damage. That is why when developing your emergency action plan it is important to determine the following:

Conditions under which an evacuation would be necessary;

A clear chain of command and designation of the person in your business authorized to order an evacuation or shutdown. You may want to designate an “evacuation warden” to assist others in an evacuation and to account for personnel;

Specific evacuation procedures, including routes and exits. Post these procedures where they are easily accessible to all employees;

Procedures for assisting people with disabilities or who do not speak English;

Designation of what, if any, employees will continue or shut down critical operations during an evacuation. These people must be capable of recognizing when to abandon the operation and evacuate themselves; and

A system for accounting for personnel following an evacuation. Consider employees’ transportation needs for community-wide evacuations.



Why Overseas Emergency Evacuation System?

9. Under what conditions should you call for an evacuation?

In the event of an emergency, local emergency officials may order you to evacuate your premises. In some cases, they may instruct you to shut off the water, gas, and electricity. If you have access to radio or television, listen to newscasts to keep informed and follow whatever official orders you receive.

In other cases, a designated person within your business should be responsible for making the decision to evacuate or shut down operations. Protecting the health and safety of everyone in the facility should be the first priority. In the event of a fire, an immediate evacuation to a predetermined area away from the facility is the best way to protect employees. On the other hand, evacuating employees may not be the best response to an emergency such as a toxic gas release at a facility across town from your business.

The type of building you work in may be a factor in your decision. Most buildings are vulnerable to the effects of disasters such as tornadoes, earthquakes, floods, or explosions. The extent of the damage depends on the type of emergency and the building's construction. Modern factories and office buildings, for example, are framed in steel and are structurally more sound than neighborhood business premises may be. In a disaster such as a major earthquake or explosion, however, nearly every type of structure will be affected. Some buildings will collapse and others will be left with weakened floors and walls.



Why Overseas Emergency Evacuation System?

10. What is the role of coordinators and evacuation wardens during an emergency?

When drafting your emergency action plan, you may wish to select a responsible individual to lead and coordinate your emergency plan and evacuation. It is critical that employees know who the coordinator is and understand that person has the authority to make decisions during emergencies.

The coordinator should be responsible for the following:

Assessing the situation to determine whether an emergency exists requiring activation of your emergency procedures;

Supervising all efforts in the area, including evacuating personnel;

Coordinating outside emergency services, such as medical aid and local fire departments, and ensuring that they are available and notified when necessary; and

Directing the shutdown of plant operations when required.

You also may find it beneficial to coordinate the action plan with other employers when several employers share the worksite, although OSHA standards do not specifically require this.

In addition to a coordinator, you may want to designate evacuation wardens to help move employees from danger to safe areas during an emergency. Generally, one warden for every 20 employees should be adequate, and the appropriate number of wardens should be available at all times during working hours.

Employees designated to assist in emergency evacuation procedures should be trained in the complete workplace layout and various alternative escape routes. All employees and those designated to assist in emergencies should be made aware of employees with special needs who may require extra assistance, how to use the buddy system, and hazardous areas to avoid during an emergency evacuation.

Why OverSeas Emergency Evacuation System?



11. How do you account for employees after an evacuation?

Accounting for all employees following an evacuation is critical. Confusion in the assembly areas can lead to delays in rescuing anyone trapped in the building, or unnecessary and dangerous search-and-rescue operations. To ensure the fastest, most accurate accountability of your employees, you may want to consider including these steps in your emergency action plan:

- Designate assembly areas where employees should gather after evacuating;
- Take a head count after the evacuation. Identify the names and last known locations of anyone not accounted for and pass them to the official in charge;
- Establish a method for accounting for non-employees such as suppliers and customers; and
- Establish procedures for further evacuation in case the incident expands. This may consist of sending employees home by normal means or providing them with transportation to an offsite location.

Why Overseas Emergency Evacuation System?



11. What employee information should your plan include?

In the event of an emergency, it could be important to have ready access to important personal information about your employees. This includes their home telephone numbers, the names and telephone numbers of their next of kin, and medical information.



Why Overseas Emergency Evacuation System?

12. What type of training do your employees need?

Educate your employees about the types of emergencies that may occur and train them in the proper course of action. The size of your workplace and workforce, processes used, materials handled, and the availability of onsite or outside resources will determine your training requirements. Be sure all your employees understand the function and elements of your emergency action plan, including types of potential emergencies, reporting procedures, alarm systems, evacuation plans, and shutdown procedures. Discuss any special hazards you may have onsite such as flammable materials, toxic chemicals, radioactive sources, or water-reactive substances. Clearly communicate to your employees who will be in charge during an emergency to minimize confusion.



Why Overseas Emergency Evacuation System?

13. How often do you need to train your employees?

Review your plan with all your employees and consider requiring annual training in the plan. Also offer training when you do the following:

- Develop your initial plan;
- Hire new employees;
- Introduce new equipment, materials, or processes into the workplace that affect evacuation routes;
- Change the layout or design of the facility; and
- Revise or update your emergency procedures.

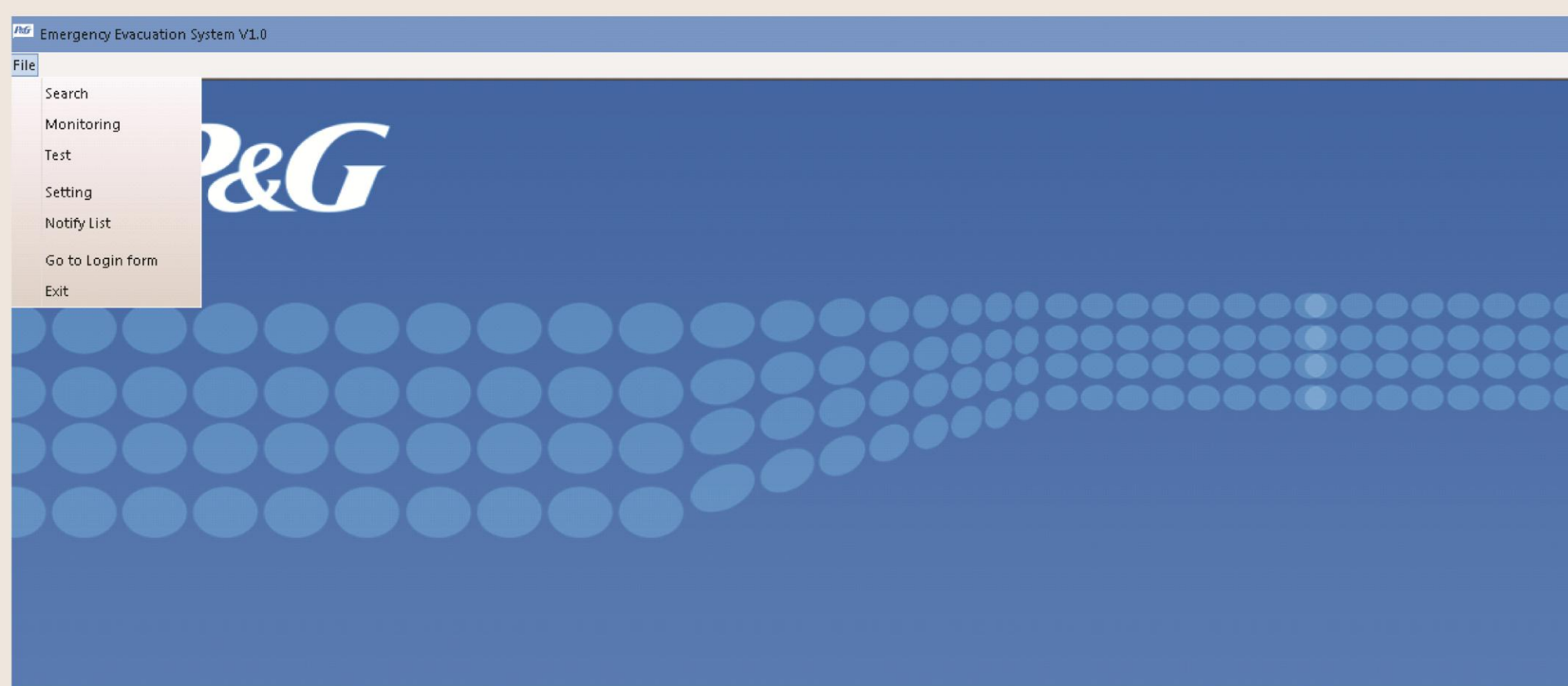


Login Screen

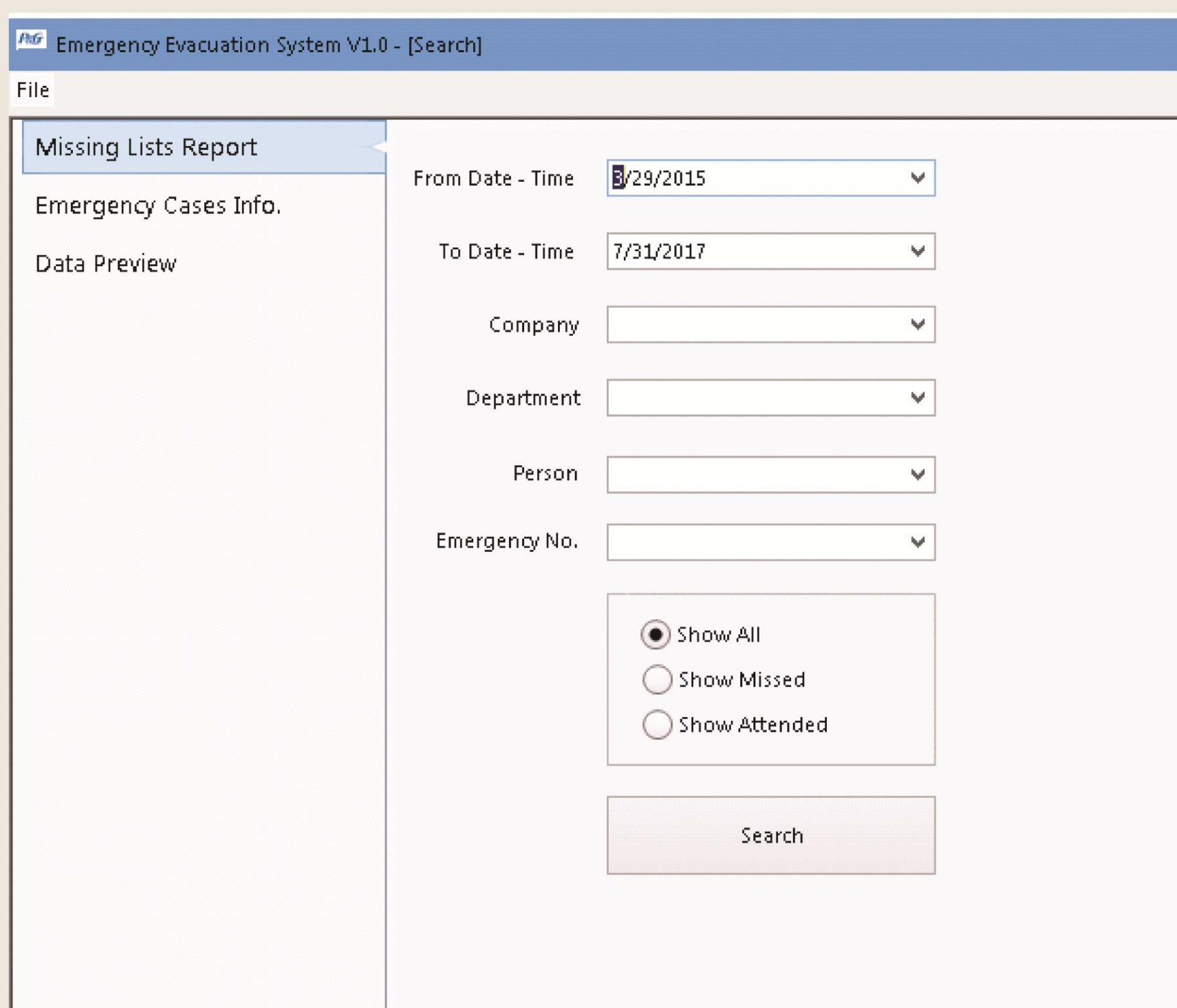


The screenshot shows a web browser window titled "Login". The main content area features the P&G logo in large blue letters, followed by "Dammam" and "Emergency Evacuation System" in bold black text. Below this is the Overseas Technology logo. To the right of the logo is a login form with two input fields: "User Name" and "Password", and a "Login" button. At the bottom left, it says "Developed by Overseas Technology © 2016".

Main Screen



Search and reporting for Evacuation cases
You can show all cases-Missed People
list – or attended for EM case



Emergency Evacuation System V1.0 - [Search]

File

- Missing Lists Report
- Emergency Cases Info.
- Data Preview

From Date - Time: 8/29/2015

To Date - Time: 7/31/2017

Company: [Dropdown]

Department: [Dropdown]

Person: [Dropdown]

Emergency No.: [Dropdown]

Show All
 Show Missed
 Show Attended

Search

Result

Emergency Evacuation System V1.0 - [Search]

File

Missing Lists Report

Emergency Cases Info.

Data Preview

No.	EM ID	Start Date Time	End Date Time	Elapsed Minutes	Evacuation Duration
1	9	2016/11/29 16:45:12	12/13/2016 1:25:37 PM	19960	12533
2	8	2016/11/26 05:59:29	11/28/2016 5:31:18 PM	3572	11073
3	7	2016/11/16 18:52:25	11/17/2016 1:42:49 PM	1130	1120
4	6	2016/10/16 02:03:09	11/14/2016 8:50:46 AM	42167	45406
5	5	2016/08/18 16:52:01	10/10/2016 10:06:32 AM	75914	75898
6	4	2016/08/18 09:31:14	8/18/2016 3:36:30 PM	365	358
7	3	2016/08/17 21:00:53	8/18/2016 9:29:34 AM	749	732

Print Search Records Count: 3832 Delete Close the Case Exit

Person Code	Card Number	Person Name	Company	Department	Enterance Time	Attendance Time	Elapsed Minutes
1646130	08000658	Thaji Al-Dobiny	MIC	SHP	2016/12/06 15:26:33	23:59:27	10514
1630	08000558	Thaji Al-Dobiny	MIC	SHP	2016/12/06 15:33:44	23:59:27	10514
1237	12000109	MOHAMMAD ABDULHA...	Gulf Moons	MWH	2016/12/06 15:22:31	23:58:51	10513
2426	08000886	Taj Shekh	Hashim Alm...	MQC	2016/12/08 15:27:35	23:57:57	13392
1633	08000947	Mohammed	Alsaleemi	MSG	2016/12/11 15:08:36	23:57:25	17712
1235	12000079	Luel Penhela	Khudair EST.	FWH	2016/12/05 19:46:49	23:57:13	9072
1233	12000056	Mohammed Hasham	Alsaleemi	FFR	2016/12/07 15:10:31	23:56:15	11951
1208	120003630	Mohammed tafa	Zawaya	DCF	2016/12/12 15:08:50	23:55:54	19150
16474	07955575	MUHAMMAD HASSAN AL...	MIC	GPR	2016/12/11 15:37:26	23:55:38	17710
18329	09800003	Muhammad Othman	Alsaleemi	MSG	2016/12/10 20:38:10	23:54:51	16269
183	08000053	Mahmoud	Alsaleemi	MSG	2016/12/10 15:08:16	23:54:51	16269

Monitoring Of lost People List

Emergency Evacuation System V1.0 - [Monitoring]

File

Emergency No : 11 Started :10/1/2015 6:18:00 PM

MIC/None...	No.	Name	Card No.	Company	Department	Enter Date Time
MIC	08000075	Abdulwahed Ibrahim Alsalih	080001527	MIC	MIC	10/1/2015 8:33:28 AM
MIC	40000437	ABDULLAH SALEM ALMUTAR	080005074	MIC	UTM1	10/1/2015 4:05:56 PM
MIC	17000705	Ahmed Husein Al-Sulaiman	080002514	MIC	FDG	10/1/2015 5:04:08 PM
None MIC	337	Visitor	080003213			10/1/2015 9:43:59 AM
None MIC	06000001	CLEANING	080001671			10/1/2015 7:45:11 AM
None MIC	1111	Dr. Mohamed Akram	080000037			10/1/2015 2:44:26 PM
MIC	1011104	AHMAD ALI ALI LAH ABU ALI KBASH	070000705	MIC		10/1/2015 12:46:30 PM

Thank you!

About us “The Owner of System”



With more than 500 customers and deployments in 5 countries, Overseas offers a comprehensive and fully integrated stack of Solutions, Consultation & cloud applications, platform services, and engineered system. learn more about overseas www.over-seas.net

Reach Us

 **Egypt: Nasr City, Cairo Abbas Al-Akkad St.**

Tel: +20 1007200031

Tel: 0222753845

 **Saudia Arabia: Rakkah District, Dammam PO Box 75826**

Tel: 0543705200

 **Email: Info@Over-Seas.net**

 **Web: www.Over-Seas.net**

Some of our clients



Some of our clients

